

The Ulteig logo is a red square with the word "Ulteig" in white, sans-serif font.

# ACCELERATE THE SUCCESS OF RENEWABLE ENERGY PROJECTS

Ulteig's **Developer Services Suite** combines advanced technology with deep industry expertise to empower **developers, owner/operators** and **stakeholders** with a comprehensive path to setting up their early stage projects for long-term success.

## SUITE FEATURES:

- **Transmission and Interconnection Planning:** Assess grid capacity and infrastructure to identify optimal project sites and mitigate risks associated with energy development challenges.
- **Buildable Area Analysis:** Evaluate topography, land use and constraints to determine viable construction zones, enabling efficient site planning and avoiding costly redesigns.
- **Environmental and Permitting Services:** De-risk your project by identifying potential regulatory and environmental obstacles early, ensuring compliance and minimizing delays during review processes.
- **Siting and Layout Optimization:** Perform in-depth analysis to optimize site design, balancing technical feasibility and cost-effectiveness to enhance project viability.
- **Production Modeling:** Conduct precise energy yield analyses to validate performance expectations, support financing and maximize long-term profitability.
- **Energy Market Analysis:** Leverage market trends and forecasts to evaluate project viability, optimize revenue strategies and inform data-driven decision-making for enhanced performance.

## THE FLEXIBILITY YOU NEED. THE EXPERIENCE YOU TRUST.

From transmission planning to market analysis, our suite covers all the essential services to de-risk your project for successful development.

- **Risk Mitigation:** Navigate the complexities of interconnection, siting and regulatory hurdles with expert guidance.
- **Project Acceleration:** Ensure accuracy while speeding up your development timeline through tailored solutions providing increased visibility into potential risks.
- **Market Forecasting:** Leverage advanced economic modeling to optimize your project's potential and secure revenue streams.

## BUILD WITH CONFIDENCE

When every decision counts, Ulteig's comprehensive Developer Services Suite empowers you to tackle early-stage risks and streamline your renewable projects. Keep your project moving forward.

[www.ulteig.com](http://www.ulteig.com) | 3350 38th Ave. S. Fargo, ND 58104  
[connect@ulteig.com](mailto:connect@ulteig.com) | (888) 858-3441

A red rectangular button with the text "LEARN MORE" in white, sans-serif font.

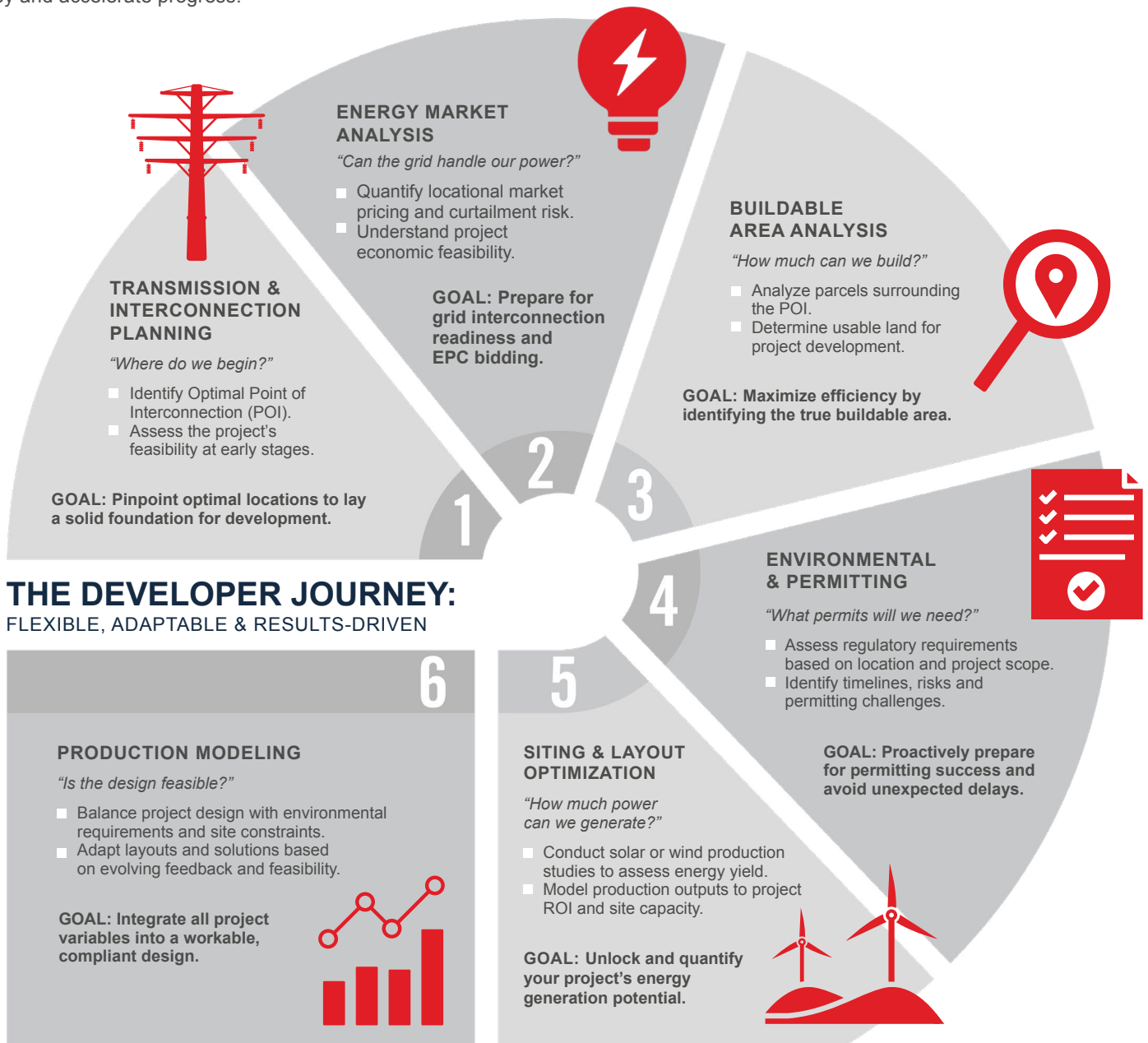
# FROM VISION TO REALITY: YOUR RENEWABLE ENERGY PROJECT JOURNEY

Explore how *Ulteig's Developer Services Suite* offers flexible support in de-risking early stages of product development.

Ulteig

## NAVIGATING THE PATH TO FINAL MODELING

Renewable energy project development is rarely linear. Each project presents unique challenges, requiring adaptable solutions at every turn. Ulteig's **Developer Services Suite** is designed to meet you where you are: providing the data, tools and insights to de-risk your journey and accelerate progress.



## THE DEVELOPER JOURNEY: FLEXIBLE, ADAPTABLE & RESULTS-DRIVEN

## AN ITERATIVE PROCESS, BACKED BY ULTEIG'S EXPERTISE

Renewable energy projects evolve; whether by adapting to permitting requirements, grid constraints or design updates. Ulteig's **Developer Services Suite** empowers you with the flexibility, insight and technical expertise to navigate each stage confidently, ensuring your project stays on track and optimized for success.



ulteig.com  
(888) 050-34441

READY TO OPTIMIZE YOUR PROJECT DEVELOPMENT JOURNEY? **CONNECT WITH OUR TEAM TODAY.**