

The Ulteig logo consists of a solid red square with the word "Ulteig" in white, sans-serif font. The letter "U" is large and bold, while the rest of the word is in a standard weight.

**Ulteig**

We listen. We solve.®



# STATEMENT OF QUALIFICATIONS

| TRANSPORTATION



## TABLE OF CONTENTS

- 2** ULTEIG OVERVIEW
- 5** OUR TRANSPORTATION CAPABILITIES
- 7** CLIENT SUCCESS STORIES
- 11** WHAT MAKES ULTEIG DIFFERENT
- 12** LOCATION AND CONTACT

# WHO WE ARE

Ulteig is a leader in the engineering industry. We are a team of forward-thinking, innovative experts who make critical connections, putting together the complex, multi-disciplinary strategies needed in today's changing world.

In over 80 years, the Ulteig team has expanded to more than 1,500 professionals, offering a full range of infrastructure solutions across 18 offices and various satellite locations throughout North America. With a depth and breadth of bench, we are well-positioned to respond to our clients' evolving needs with flexibility, agility and a spirit of collaboration.

Today, Ulteig manages an average of 3,400 technical and field service projects per year. We are continually expanding our portfolio of projects that serve our core Lifeline Sectors®, comprising Power, Renewables, Transportation and Water.

## THE VALUES AT OUR CORE



### **CLIENT SUCCESS:**

We create exceptional value through our expertise and collaborative approach.



### **INTEGRITY:**

We are authentic and always do what's right.



### **ENTHUSIASM:**

We are passionate about the work we do and have fun doing it.



### **INCLUSION:**

We seek diverse backgrounds, empower all voices and value all perspectives.



### **AGILITY:**

We act with speed, flexibility and balance.



### **INNOVATION:**

We leverage ingenuity and foster creative outcomes.



## AWARDS AND RECOGNITION



ENR TOP 500  
DESIGN FIRMS



EC&M TOP 10 ELECTRICAL  
DESIGN FIRMS



ZWEIG GROUP  
HOT FIRMS LIST



USA TODAY TOP  
WORKPLACE



ACEC NORTH DAKOTA  
ENGINEERING EXCELLENCE



ACEC COLORADO  
ENGINEERING EXCELLENCE



DENVER  
TOP WORKPLACE



PRAIRIE BUSINESS 50  
BEST PLACES TO WORK



STAR TRIBUNE:  
MINNESOTA'S TOP  
WORKPLACES



ENERGAGE  
INNOVATION



ENERGAGE WORK-LIFE  
FLEXIBILITY



Proud Member

MILLION WORK  
HOURS AWARD



# HOW WE WORK

More than ever before, communities rely on the connections that bring infrastructure, services and information to their citizens. Ulteig is committed to designing, planning, building, sustaining and maintaining the interconnected infrastructure vital to everyday life.

## OUR PEOPLE AND THE PROMISE WE MAKE:

Ulteig is wholly built on the belief that growth starts with individual achievement. Innovation requires talented, curious people. Our employee-owners work in multi-disciplinary teams across core Lifeline Sectors® to learn from each other, create new approaches and devise expert solutions. Our clients are the ultimate benefactors of this focus on professional development, equipped on every project with people capable of listening carefully and comprehensively, and solving the complicated problems no one else can solve. Further, our employee-supportive approach means less turnover and more consistency for your critical infrastructure projects.

**100%**  
EMPLOYEE OWNED



**1,500+**  
EMPLOYEES



**300+** LICENSED  
PROFESSIONAL ENGINEERS



**50+**  
CONSTRUCTION  
MANAGEMENT PROFESSIONALS



**150+** AUTOMATION,  
INTEGRATION AND SYSTEM  
PROTECTION EMPLOYEES



**10+**  
BRIDGE/  
STRUCTURAL  
PROFESSIONALS



**120+**  
CIVIL EMPLOYEES



**5**  
TRAFFIC  
ENGINEERS  
AND PROFESSIONALS



**120+**  
PROJECT MANAGEMENT AND  
FIELD SERVICE EMPLOYEES





## GRANTS AND FUNDING

*Ulteig provides a comprehensive suite of services to identify, obtain and manage funding for transportation infrastructure projects. Our educated team helps clients get an edge in today's competitive discretionary funding environment.*

**Services:**

- Funding Advisory and Strategy
- Grant Writing and Application Development
- Grant and Funding Administration

## LAND SERVICES

*Delivering a wide range of land services from land surveying, geographic information systems and right-of-way acquisition. Ulteig brings a unique combination of capacity and experience to your project.*

**Services:**

- Geographic Information Systems (GIS)
- Land Surveying
- Right-of-Way

## ENVIRONMENTAL

*Our environmental team understands the big picture of what a project intends to accomplish. We work together to find solutions that meet your needs while minimizing impacts to the environment and complying with federal, state and local regulations.*

**Services:**

- Environmental Documentation
- Federal, State and Local Permitting
- Environmental Planning and Analysis

## PLANNING AND STUDIES

*Our in-house experts manage all aspects of a wide range of studies in transportation planning, traffic engineering and smart infrastructure. With direct access to our team, you have more efficient, reliable and insightful analysis to support decision-making. We leverage our vast experience in the transportation market to help you plan for the future.*

**Services:**

- Transportation Planning and Analysis
- Traffic Engineering
- Safety Planning, Modeling and Analysis
- Smart Work Zones
- Travel Demand Modeling and Analysis





# OUR TRANSPORTATION CAPABILITIES

Founded in 1944, Ulteig has a long and storied history in transportation, connecting communities across the U.S. with economic, social and cultural opportunity. With roots in the Upper Midwest, we've expanded our geography to serve communities throughout the U.S.

Rather than viewing transportation as solely an exercise in engineering, Ulteig frames transportation as a Lifeline Sector—to Ulteig, transportation is essential to life and livelihood, and deserves special understanding, attention and aptitude. In keeping with this philosophy, Ulteig's Transportation group offers a comprehensive range of services to bring our clients' visions to fruition. We support projects from start to finish, including funding and grant administration, NEPA and initial outreach and awareness; planning and modeling; funding and policy alignment; site selection, evaluation and permitting; design, construction and delivery; and asset maintenance and longevity. At every stage, Ulteig centers thoughtful, contextual and equitable engagement with key stakeholders and the broader community.



## PROJECT DELIVERY SERVICES

*As your trusted partner, Ulteig will work with you to determine the best resources to satisfy your unique needs. Our suite of services encompasses a range of solutions related to program and project management, construction management and other consultative services.*

### **Services:**

- Program and Project Management
- Construction Management
- Quality Control and Documentation
- Advisory Services

## DESIGN AND ENGINEERING

*As industry leading infrastructure experts, we develop context-sensitive and cost-effective designs for every phase of transportation projects. We specialize in design, implementation and engineering for work in roadway, highway, bridge and structures.*

### **Services:**

- Transportation Engineering, Modeling and Planning
- Roadway, Highway and Multimodal Design
- Bridge and Structure Inspection
- Bridge and Structure Design and Engineering



# CLIENT SUCCESS STORIES

From context-sensitive safety approaches to adaptable design, Ulteig leverages a consultative approach and diverse capabilities to help our clients achieve their vision of success.

## US 52 PASSING LANES | NORTH DAKOTA

The 362-mile highway that runs from the Canadian border to the Minnesota-North Dakota border has experienced a dramatic rise in traffic over the years, particularly among heavy-duty trucks and agriculture equipment on a stretch of US Highway 52 in North Dakota. According to a North Dakota Department of Transportation (NDDOT) scoping document, this corridor averages 33% truck traffic, whereas the rest of North Dakota averages 21%. Passing and turn lane improvements were needed to improve the flow of traffic, reduce the hazard of slower-moving ag equipment and stabilize transportation speeds. NDDOT identified an acute need as a 36-mile stretch of US 52 from Carrington to Fessenden, the first segment of a multi-phase, five-part project.

NDDOT turned to Ulteig to focus on designing passing lanes on both sides of US 52 from Carrington to Fessenden. This first project segment began with planning, environmental and field studies ahead of the engineering design. Significant wetlands impacting this corridor proved challenging, so Ulteig used the newer technique called “ditch shifts,” which allowed wetlands to re-establish in shifted ditch areas without further mitigation. This was the largest-scale implementation of ditch shifts in NDDOT’s history. Because of Ulteig’s successful use of this technique, NDDOT will incorporate the use of ditch shifts into future projects.

The project also had an accelerated timeline (due to a grant NDDOT received to fund the project). To save time, Ulteig performed many project tasks concurrently instead of consecutively, in particular using a phased survey process instead of waiting for the entire survey package to be completed before starting other tasks. Ulteig finished what would have been an 18-month project in nine months and came in under the design budget.





## SDDOT RESEARCH SAFETY PROJECT | SOUTH DAKOTA

Ulteig performed a safety research study for the South Dakota Department of Transportation (SDDOT) to help the state implement a zero-death initiative. There are multiple national strategies and approaches to achieving a fatality-free transportation system, and the Ulteig study team coordinated with multiple South Dakota agencies, Law Enforcement Associations and Tribal Partners to fashion a safety initiative specific to South Dakota. Ulteig developed an implementation plan that defined the State and local government agencies' roles and responsibilities, guiding the state's execution of the safety initiative.



Work elements included reviewing literature and evaluating adopted federal, state and local agency zero-fatality transportation safety initiatives, interviewing zero-fatality initiative coordinators, reviewing South Dakota policies and standards, recommending new safety processes, evaluating potential impacts of the safety initiative, and identifying improvements for South Dakota state and local agencies to implement the zero-fatality transportation safety initiative. The project also included a unique partnership with North Dakota State University to support the cutting-edge research, which is included in the National Academies of Science Critical Issues in Transportation repository.

## RIO GRANDE GORGE BRIDGE | NEW MEXICO

The Rio Grande Gorge Bridge, completed in 1965 near Taos, NM, is the seventh-highest US bridge, spanning 650 feet above the Rio Grande River. Listed in the National Register of Historic Places, it was inspected under a 2021 FHWA memo following a fracture in a T-1 steel bridge in Arkansas. Ulteig led comprehensive bridge inspection and rehabilitation efforts, testing 92 welds at 36 locations for discontinuities in T-1 steel butt welds. Our team delivered a turnkey solution, managing structural analysis, repair design, traffic control, lead paint abatement, and advanced NDT testing—including drone-based digital twin creation and rope access inspections.

The team created a paint removal and replacement plan and applied it to mitigate all hazardous materials and waste in compliance with all necessary environmental standards for the project duration. Discontinuity or crack remediation in the form of designed coring repairs was performed at all locations where discontinuities were identified throughout the structure. Twelve discontinuities in seven welds were identified and addressed through precision-engineered coring repairs, adhering to AWS D1.5 standards. Ulteig performed all calculations in accordance with AASHTO and NMDOT guidelines. A finite element analysis and load rating were performed for each location of interest and the overall structure as a part of the preparation for the NDT investigation and for repair design. The project team combined advanced technology with project management best practices—from detailed plans, regimented procedures, and careful execution—to preserve this historic and iconic structure for years to come.



## FARGO-MOORHEAD DIVERSION | MINNESOTA/NORTH DAKOTA

Ulteig serves as the Construction Contractor's Quality Control Team for the Stormwater Diversion Channel and Associated Infrastructure segment of the \$3.2 billion Fargo-Moorhead (FM) Area Diversion project. This 30-mile channel diverts floodwaters from the Red River, which flows through the neighboring cities of Fargo (ND) and Moorhead (MN). In this role, Ulteig provides comprehensive construction quality control services for the project.

The FM urban area has historically faced severe flooding, with record-breaking events in 1997 and 2009. Located in one of the flattest regions on Earth—with a gradient of less than one foot per mile—the Red River Valley has relied on temporary flood mitigation measures such as sandbags, floodwalls, and property buyouts. However, a permanent solution was necessary.

The FM Area Diversion Project is designed to protect the FM metro area by channeling floodwaters around the communities and back to the Red River north of the FM metro area. There are four main components to the project including the stormwater diversion channel which includes a 30-mile-long diversion channel, diversion outlet, two aqueducts (which carry the Sheyenne and Maple rivers over the channel), 14 drainage inlets, 19 bridges, and over 100 miles of road. The southern embankment component is being provided by the U.S. Army Corps of Engineers and includes a 22-mile earthen embankment and three gated control structures. Mitigation projects and in-town features round out the comprehensive project.

Ulteig's Quality Control Team assists with resolving complex problems while providing field inspection and testing services in collaboration with ASN Constructors' operations team to ensure that all construction activities comply with the stormwater diversion channel construction plans and specifications, and meet the standards set by the project owner and the U.S. Army Corps of Engineers (USACE). At peak operations, more than 50 team members are actively engaged daily across the stormwater diversion channel project site, delivering quality control for various project components. Additionally, through a secondment agreement, Ulteig team members serve as the Construction Quality Control Manager and Resident Engineer, overseeing the development and implementation of processes and procedures to ensure contractual compliance and final quality control documentation before project handover.

As part of its quality control support, Ulteig was tasked with auditing more than 11,000 logs and testing reports for errors and omissions. To manage this extensive volume, Ulteig developed an innovative algorithmic solution that automated data extraction from these reports. This advancement reduced review time from four minutes per document to just 0.1 seconds—a 2,400-fold improvement over manual processing.



## TXDOT FM 159 | TEXAS

The FM 159 project is a response to the rapid encroachment of the Brazos River toward FM 159. Over the past several years, the river has been advancing at an alarming rate of approximately 15 feet per year, threatening to sever the roadway entirely within the next five to 10 years. This erosion, driven by natural river dynamics and exacerbated by frequent flooding events, has placed significant pressure on the infrastructure in the area.

The Texas Department of Transportation (TxDOT) had previously attempted to mitigate a similar threat upstream by armoring the riverbank to prevent further erosion. However, a significant flood event undermined those efforts, washing away the protective measures and highlighting the need for a more robust solution at the location along FM 159. The challenge, therefore, was to develop a sustainable and cost-effective approach to preserving this vital transportation link. Ulteig was brought on board as the prime consultant for the FM 159 project, marking a significant milestone as our first major project in Texas. Ulteig's team coordinated closely with TxDOT to push forward the design and environmental assessments despite delays caused by the COVID-19 pandemic.

During this phase of the project, Ulteig developed a new alignment for FM 159, shifting the roadway approximately one-quarter mile north, parallel to the existing roadway and the BNSF railroad alignment. This realignment included the design of a two-lane roadway with 11-foot driving lanes and six-foot shoulders integrated within a proposed 100-foot right-of-way (ROW).

Ulteig's environmental team conducted thorough analyses to identify potential impacts and constraints. To make informed decisions that balanced environmental concerns, safety and cost-efficiency, an alternatives evaluation matrix was developed to allow Ulteig and TxDOT to assess design options collaboratively.

Ulteig also successfully merged two 3D modeling programs, allowing for the seamless integration of independently developed designs. This technological innovation improved the accuracy and efficiency of the design process.

Throughout the entire project, Ulteig maintained open communication with TxDOT, developing a comprehensive, interactive dashboard to track the project's budget, schedule and DBE goals.

# OUR DIFFERENTIATORS

## HIGH VALUE CLIENT ENGAGEMENT

Effectively managing scopes, schedules and budgets is a given. Ulteig teams are trained to go beyond the basics in our work with clients and with each other using a qualitative system called High Value Client Engagement. Every team member regardless of their level of client interaction—from graduate engineers to seasoned project managers—are trained on 12 principles of client engagement, from self-awareness and presence to trust-building, proactivity and problem-solving.

## BEYOND LOCAL TEAMS—BEST PRACTICE SHARING ACROSS REGIONS

Transportation leaders—like DOT executives—don't get to collaborate with each other as frequently as they'd probably like to. Ulteig believes it's incumbent upon our teams to share best practices from across geographies so that every transportation project can benefit from best practices, lessons learned and innovations achieved in other locations across the U.S. Ulteig's transportation teams regularly share project debriefs and spotlights from our work around the country so we can learn and grow together.

## PROJECT-DRIVEN TECHNOLOGY SOLUTIONS

Ulteig's transportation teams leverage a bottom-up approach to technology. Rather than forcing generic technology innovations onto projects, Ulteig's talented staff are trained to develop technology solutions—from integrated project delivery to cutting-edge modeling—to solve the unique challenges individual projects require.

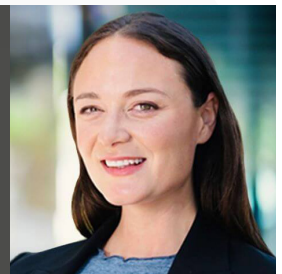
## CONTACT US

### MALLORY SCHUPP

*Market Director, Transportation & Water*

720-873-5703

[mallory.schupp@ulteig.com](mailto:mallory.schupp@ulteig.com)



### MOUNTAIN WEST & DESERT SOUTHWEST

#### MOLLY THIEBAUT

*Market Leader, Transportation*

720-873-5822

[molly.thiebaut@ulteig.com](mailto:molly.thiebaut@ulteig.com)



### TEXAS

#### ALDO LOPEZ

*Market Leader, Transportation*

605-323-6072

[aldo.lopez@ulteig.com](mailto:aldo.lopez@ulteig.com)



### UPPER & CENTRAL MIDWEST

#### MIKE HUFFINGTON

*Senior Market Leader, Transportation*

701-280-8655

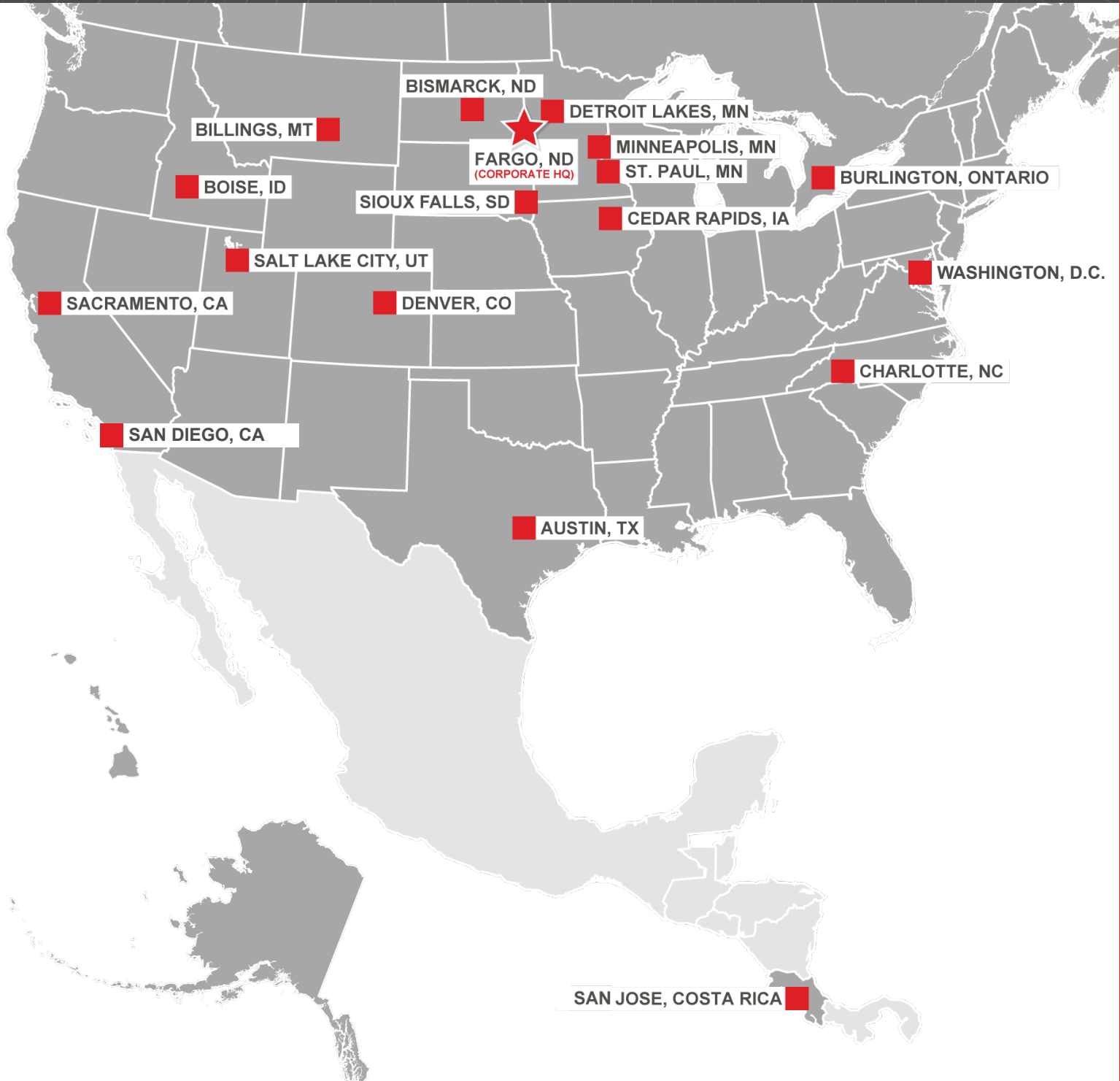
[mike.huffington@ulteig.com](mailto:mike.huffington@ulteig.com)




# LOCATIONS AND CONTACT

We have locations throughout North America to best serve our surrounding communities.

**DISCOVER AN ULTEIG LOCATION NEAR YOU →**







# CELEBRATING 80 YEARS OF SOLVING.



**Ulteig**

Ulteig delivers comprehensive engineering/design services, program management, technical services and field services that strengthen infrastructure vital to everyday life. An employee-owned company, Ulteig connects people and resources to develop compelling, integrated solutions across the Lifeline Sectors of Power, Renewables, Transportation and Water. Ulteig leverages its expertise throughout North America with a wide range of public and private clients.